

FLEXSURE FITTING ASSEMBLY



STEP 1: Connect Adapter- Connect FlexSure adapter to system component.



STEP 2: Separate Flow and Return Lines- Separate insulated lines by slitting cover. Care should be taken to avoid damage to wire or insulation.



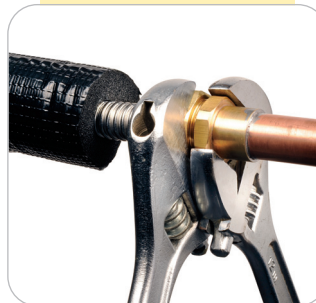
STEP 3: CSST End Prep*- Cut is centered in the valley of a corrugation. Use light roller pressure with extra rotations in one direction to leave tubing round and free of burrs.



STEP 4: Install Nut and Bushing- Place nut on CSST and push back approximately 2". Place bushings on CSST as shown.



STEP 5: Insert Bushing- Insert bushing assembly into adapter body.



STEP 6: Wrench Nut- Slide nut over bushing and thread onto adapter body. Tighten nut. Some resistance will be experienced as the nut begins to compress the tubing corrugation and create the double wall flare seat. Continue to wrench the nut until the resistance to wrenching increases and the double wall flare is tightly seated.

***Important:** A flare fitting requires a clean CSST cut. Burrs can interfere with sealing. Use a FlexSure tubing cutter with sharp blade for best results.

Caution: Ends of cut CSST are sharp.

FEATURES:

- Metal to metal seal/No gaskets or O-rings
- Multiple-point seal
- Brass fittings are reusable
- Self-flaring/No special tools required
- Patent pending design



FlexSure® - Flexible Stainless Steel Tubing Systems
 Titeflex Corporation
 603 Hendee Street • Springfield, MA 01104
 Ph: 1-888-353-9471
www.flexsure.net